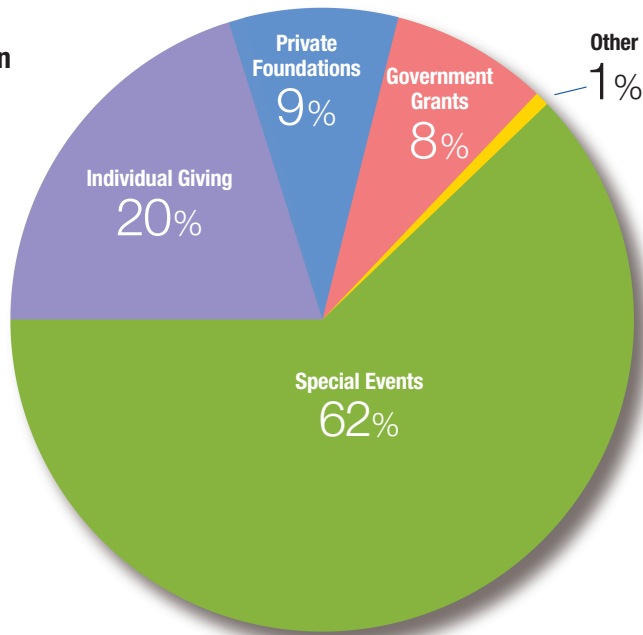


**The Progeria Research Foundation**  
income analysis 2011

TOTAL REVENUE  
\$2,028,548

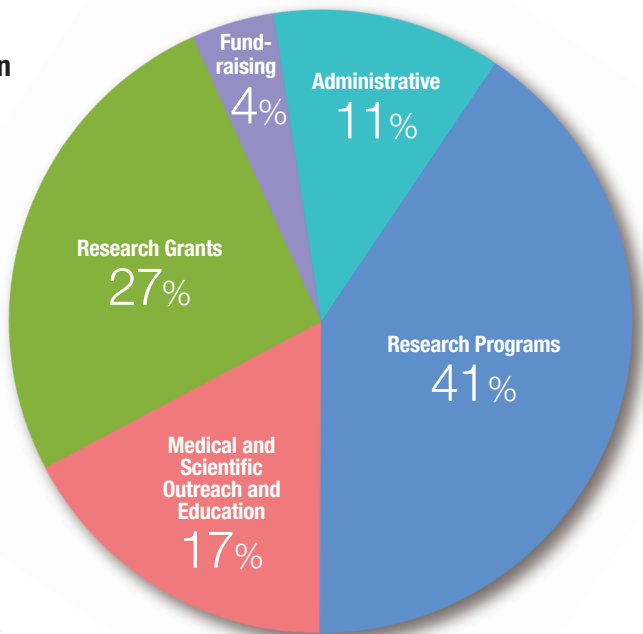


**The Progeria Research Foundation**  
expense analysis 2011

TOTAL EXPENSES  
\$1,367,355

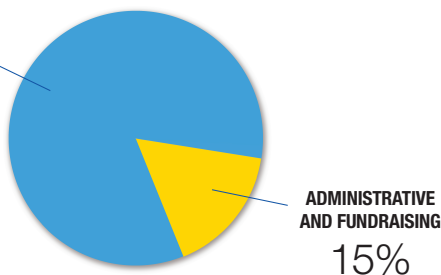
**NET ASSETS**  
\$3,455,539

Much of these funds are designated for anticipated, future clinical trials and drug development costs



**EXPENSE SUMMARY**

**PROGRAMS**  
85%



**PRF in 2012 and Beyond**

In the years to come, we intend to live up to our reputation of rapid and impactful accomplishments, including the following:



Continue to forge ahead to **discover whether the current trial treatments are working to help the children.**



Work towards **new treatments and treatment trials** for children with Progeria.



Continue our efforts to **promote drug discovery** and partner with drug companies, to develop potential treatments and the cure for Progeria.



Continue to **expand the Find the Other 150 Campaign globally**, to increase awareness of Progeria so more children will be found and helped by PRF.



**Increase** the number of participants in **the International Registry, Cell & Tissue Bank and Medical & Research Database** projects, so that scientists can continue to use them as research tools to understand Progeria, heart disease and aging.



**Fund** additional **research proposals** that focus on studying the Progeria gene and how this defect can be corrected.



Continue to **engage and motivate** our enthusiastic **volunteer community** to further increase revenue and expand our programs